



Maybe Just Maybe

Lyrics & Vocal - Harvey Ruvin

Music and Production - Rudy Perez

Technical Assistance - Zachary Ruvin

▶ ▶▶ 🔊 0:00 / 2:14



<https://www.youtube.com/watch?v=sRS6LnnBs5s>



TAMPA BAY

REGIONAL RESILIENCY COALITION

**An Initiative of the
Tampa Bay Regional Planning Council**



The Tampa Bay Region

- 5,000 square miles
- 3.6 million residents
- Accounts for 18% of Florida's GDP
- 16th largest metro economy in the U.S. (\$157 Billion)
- Dense coastal development
- Rich coastal resources

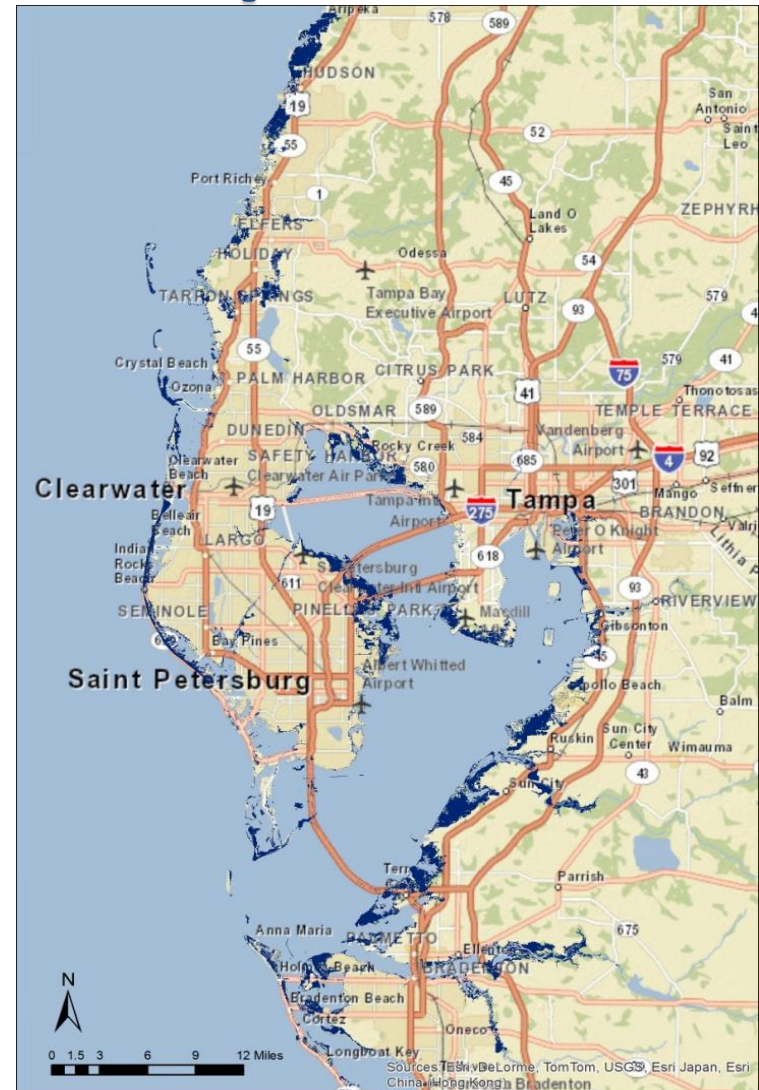
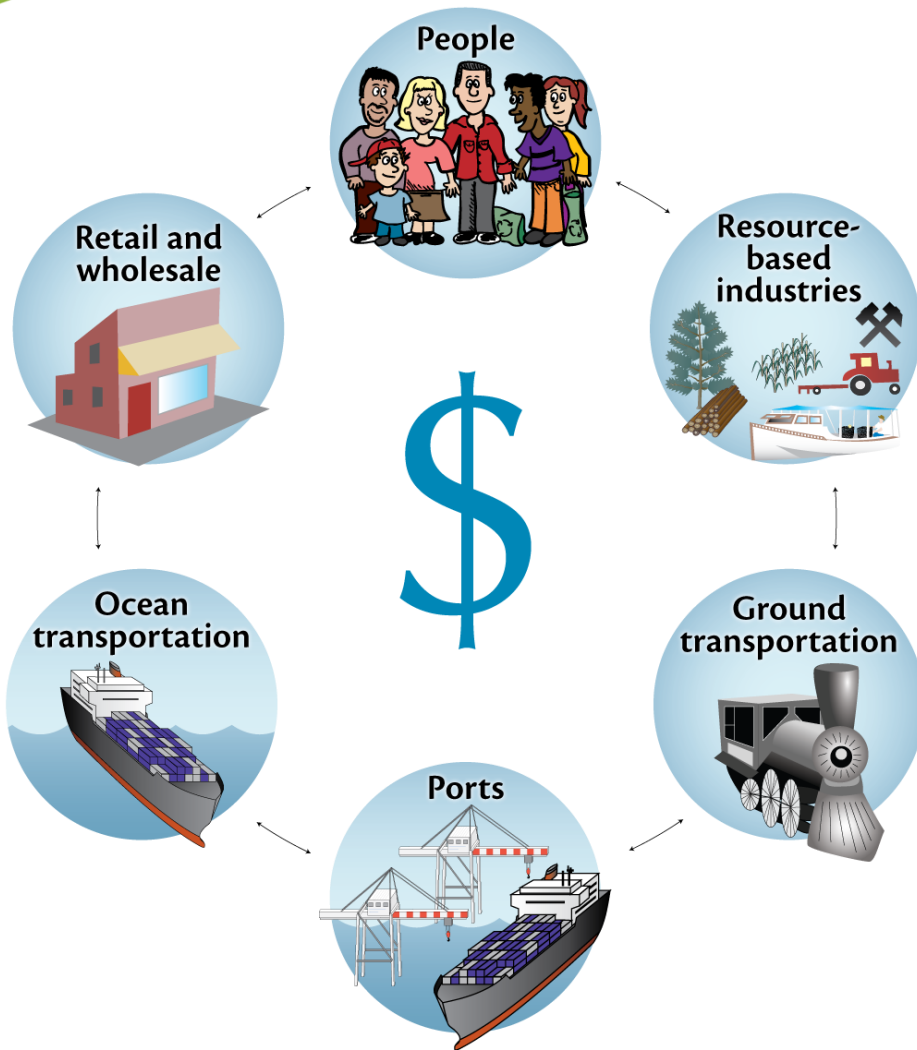


Interconnected & Interdependent

- Transportation systems
- Water management
- Critical habitat & aquatic systems
- Communities & economies
- Shared vulnerabilities



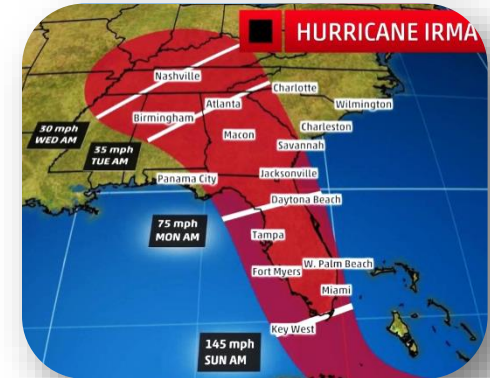
Sea Level Rise Economic Impacts



Conceptual diagram illustrating how sea-level rise affects non-coastal areas.
 Diagram courtesy of the Integration and Application Network (ian.umces.edu), University of Maryland Center for Environmental Science. Source: Boesch, D.F. (editor), 2008. Comprehensive Strategy for Reducing Maryland's Vulnerability to Climate Change Phase I: Sea-level rise and coastal storms. Report of the Scientific and Technical Working Group of the Maryland Commission on Climate Change. University of Maryland Center for Environmental Science, Cambridge, Maryland. This report is a component of the Plan of Action of the Maryland Commission on Climate Change, submitted to the Governor and General Assembly pursuant to Executive Order 01.10.2007.07.

Genesis

- Initiated in January 2018
- Response to shared challenges
- Voluntary collaboration
- Commitments
 - Policy coordination
 - Common baseline
 - Regional action plan
 - Annual summits



TAMPA BAY
REGIONAL RESILIENCY COALITION

A Plan for Action

We face the same future and climate uncertainties. We share the same coastal vulnerabilities. Our economies are tightly connected.

This Coalition will provide a formal platform for local governments to:

- Work together to create guidelines for the development of resilient communities
- Learn “**Best Practices**” from each other and from other regions
- Leverage regional resilience efforts, to enhance funding and increase competitiveness for grant funds.

Where do we go from here

- Workshops
- Identify Regional Resiliency Priorities
- Workgroups are being established to involve interested parties and the general public
- Regional Resiliency Action Plan





An Initiative of the
Tampa Bay Regional Planning Council



TAMPA BAY
REGIONAL RESILIENCY COALITION